



## Open Development Land in Lisbon

### Overview

**The City of Lisbon is seeking qualified developers who will also take ownership of the Wulff and Brown Loop site for a build-to-suit residential development project. Located at Wulff and Brown, 1st Edition, Block 1 (Lots 7–21) and Block 2 (Lots 1–6), this site offers a prime opportunity to address the growing demand for quality residential housing in our community.**

**We invite developers to submit proposals to design, build, and ultimately take ownership of a residential development that meets the needs of our expanding population. This site is zoned R-1 Residential and is ready for immediate construction.**

- Please see attached maps.

### Project Scope

The City of Lisbon seeks proposals that include a mix of housing options, specifically:

- **Multifamily Homes:** Developments that can accommodate multiple families, providing affordable and diverse living options.
- **Apartments:** Construction of apartment complexes that cater to various demographics and income levels.
- **Single-Family Homes:** Development of single-family residences to promote community growth and family living.

The City of Lisbon is prepared to incentivize this project through:

- **Underground Materials:** Support for the acquisition of necessary underground materials to facilitate construction.
- **Pre-Planned Blueprints:** Planning and Zoning input on the blueprints to help streamline the development process.

## **Proposal Submission Guidelines:**

We invite interested developers to submit comprehensive proposals that outline their plans for the housing project, including:

- ✓ Project design and layout
- ✓ Project timelines
- ✓ Estimated budget and financing options
- ✓ Community impact and benefits

**Submission Deadline:** This will remain open until the city council has a viable project.

For additional inquiries or to schedule a site visit, please contact:

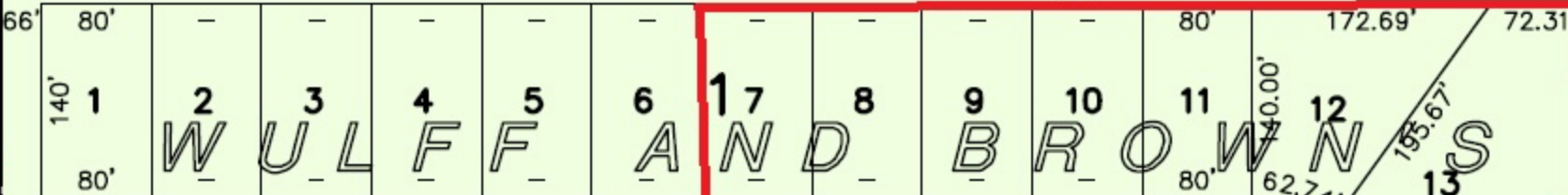
Kristina L Dick  
Economic Development Director  
[Kristina@cityoflisbon.net](mailto:Kristina@cityoflisbon.net)  
701-683-4140 Office  
701-793-2279 Mobile

STATE HIGHWAY NO. 27

100'

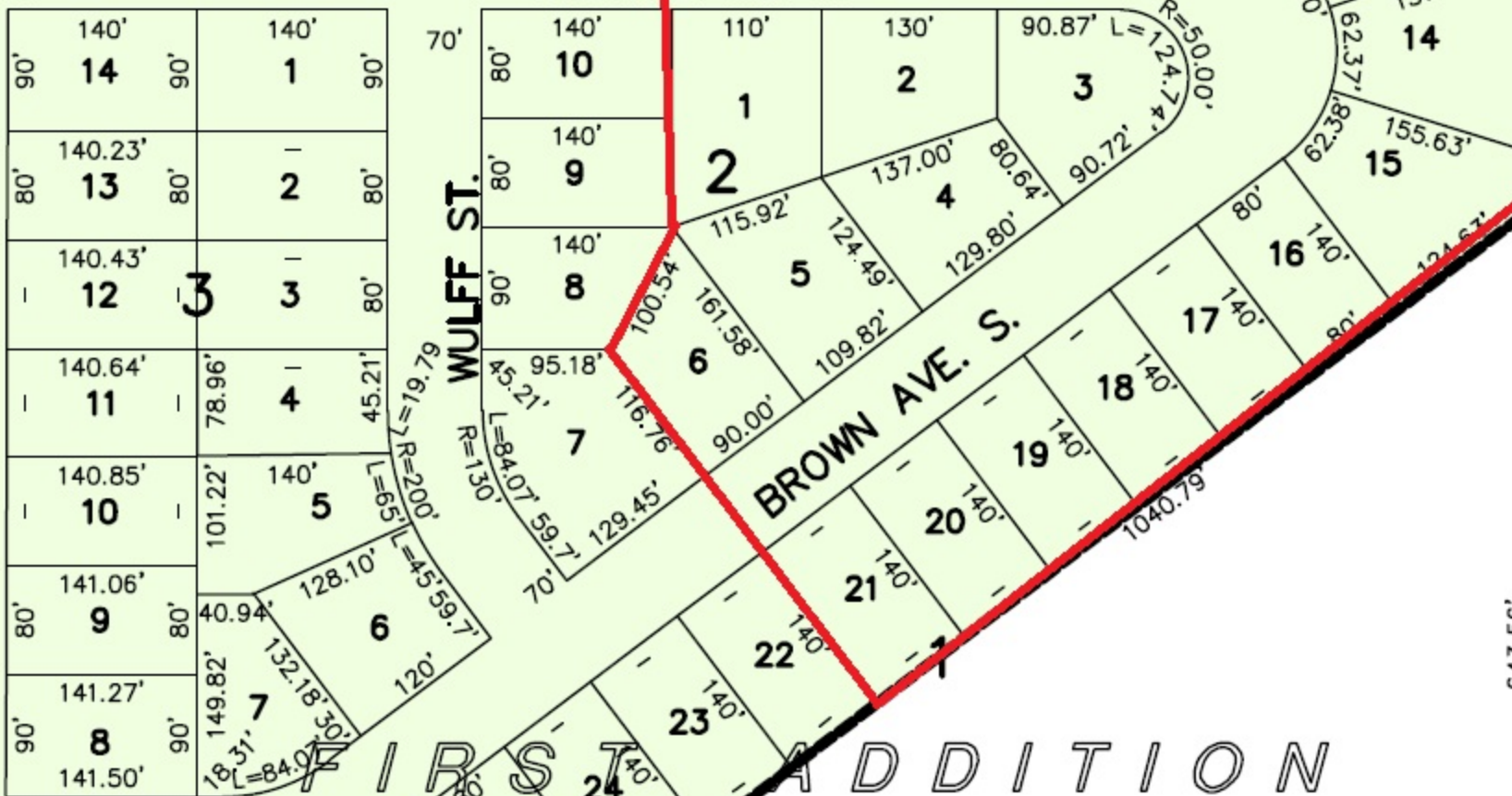
100'

1125'



70'

BROWN AVE. N.



70'

N COLN ST.



24'

964.64'

643.56'